

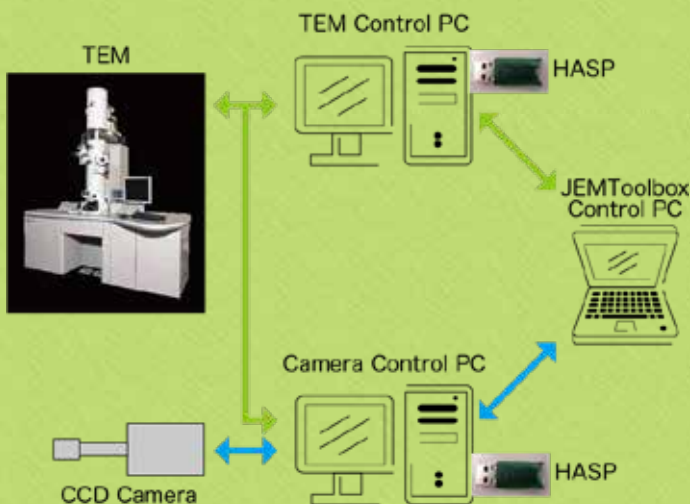
JEM Toolbox

§ Outlines

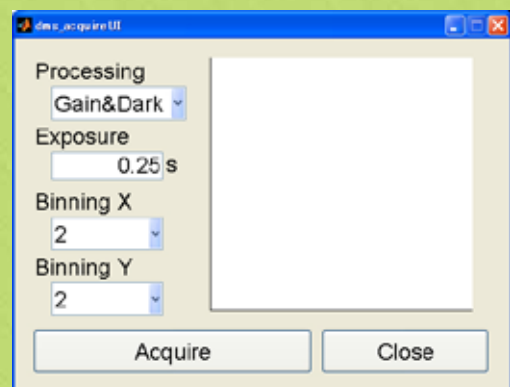
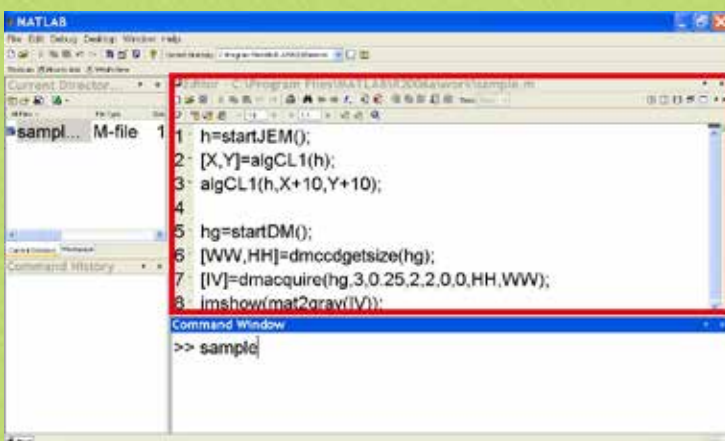
JEM Toolbox adds functions to MATLAB (*1) for controlling JEOL's transmission electron microscopes (TEMs) and attachments. With more than 100 commands, JEM Toolbox allows you to control virtually all TEM functions including the electron gun, lens, and stage. MATLAB is a numerical computing environment used by numerous researchers for its straightforward programming language and validation features as well as an abundant set of functions. Leveraging MATLAB's features makes it incredibly simple to create programs for controlling the TEM and CCD camera, and to perform various computations on acquired images. JEM Toolbox is an innovative software product enabling the user to perform full-scale program creation. (*1)MATLAB is a registered trademark of The MathWorks, Inc.

§ Features

- TEM control commands
Features more than 100 commands for controlling high voltage, lenses, deflection coils, stages, and apertures.
- Attachment control commands
Provides commands for controlling various makes of cameras and STEM devices.
- Programming
Enables TEM control using MATLAB's simple program creation and validation functions.
- Remote control
PCs running the MATLAB environment are connected via a network to TEMs and their controlling PCs, thus enabling remote control.
- Operating environments
Windows (7, 8) + MATLAB



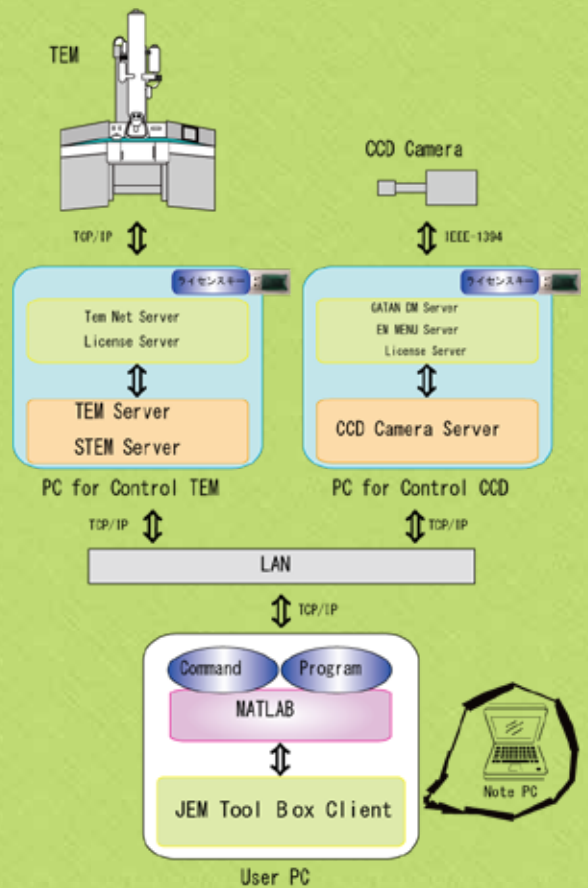
§ Operation windows



§ Configuration

- TEM Server
To be installed on the PC controlling TEM (*2)
- CCD Camera Server
To be installed on the PC controlling CCD (*2)
- STEM Server
To be installed on the PC controlling STEM (*2)
- JEM ToolBox Client
No license key is required.(It is possible to install on multiple machines.)

(*2) The license key is required to operate this.



§ Specifications

Controllable electron microscope(*3)	JEM-1400, JEM-1400Plus, JEM-ARM200F, JEM-2100, JEM-2100F, JEM-2200FS, JEM-2500SE, JEM-2800, JEM-ARM300F, JEM-3100F, JEM-3200FS
Controllable CCD camera	JEOL, GATAN, TVIPS, OLYMPUS SIS, AMT
Controllable Scan Controller	JEOL
Software	MATLAB R2007b 以降 (for Windows)

(*3) The specifications are partially different

The descriptions in this document are based on conditions as of Aug. 2016. The functions and specifications of this product may be changed without any prior notification. Confirm the latest information. Any proper nouns such as company names and products names in this document are trademarks or registered trademarks of the respective companies.

Contact



SYSTEM IN FRONTIER INC.

2-8-3 Shinsuzuharu Bldg.4F Akebono-cho Tachikawa-shi, Tokyo 190-0012

Tel.+81-42-526-4363

<http://www.temography.com/>

