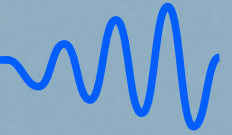
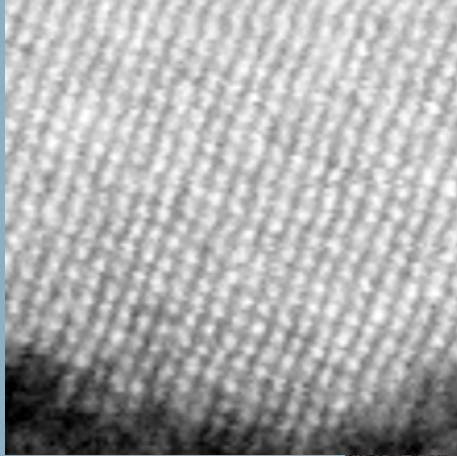


STEM Meister

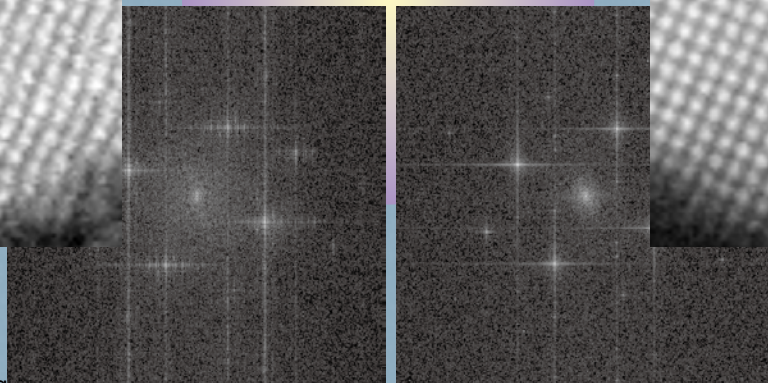


STEM Meister is an application equipped with requested functions such as STEM drift correction and panoramic imaging. Technology accumulated from Shot Meister(*1) has been utilized along with our advanced STEM knowhow. The result is a new, powerful STEM imaging tool!



106.75 [us/pixel] x 1 image

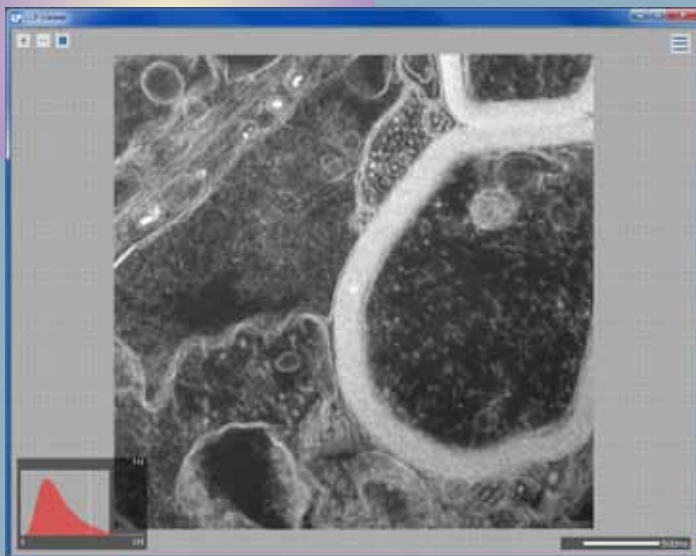
Correction of image shift and distortion using an Anti-Drifting System



With ADS
1.0 [us/pixel] x 100 images

Limitless Panorama using Image Shift and Motor Stage are possible

JEM-ARM200F Mag x 5.0M
Sample Name: α -Fe nanocrystal in Fe-Si-B-P-Cu alloy(*2)



JEM-2100 Mag x 120k Deflector 3 x 3

Compatible Models: JEM-1400, JEM-1400Plus, JEM-2100, JEM-2100F, JEM-2200FS, JEM-2500SE, JEM-2800, JEM-ARM200F, JEM-ARM300F, and other scanning imaging devices compatible with these

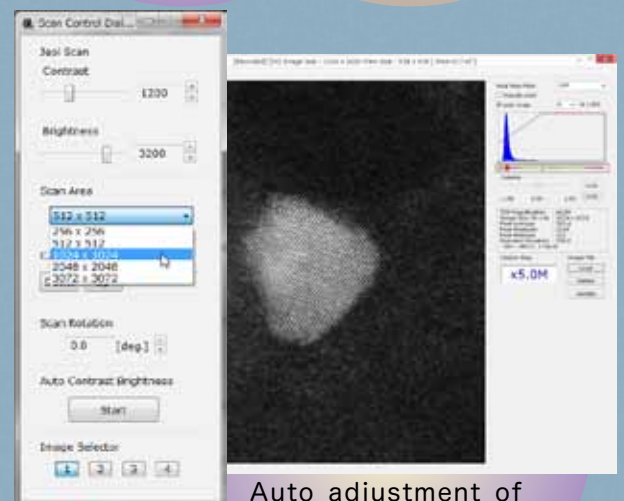
Compatible OS: Windows XP and 7 (Not compatible with Windows 2000)

*1 Product made by our company. For more details, please visit our website at <http://www.temography.com/>.

*2 Samples provided by Dr. Masahiko Nishijima and Dr. Kazuhisa Sato of the Institute for Materials Research, Tohoku University

*3 Product made by our company. For more details, see the back cover.

Possible to link with STEM ☆ MAGICA(*3)



Auto adjustment of Focus and Brightness/Contrast